

# Holiday Inn Express Birmingham - Star City



[View the Access Guide](#)

Cuckoo Road, Heartlands Parkway, Nechells, Birmingham B7 5SB  
0871 510 1378  
[www.ihg.com/holidayinnexpress/hotels/gb/en/birmingham/bhxsc/hoteldetail](http://www.ihg.com/holidayinnexpress/hotels/gb/en/birmingham/bhxsc/hoteldetail)  
(<https://www.ihg.com/holidayinnexpress/hotels/gb/en/birmingham/bhxsc/hoteldetail>)

Guide Last Updated: 13/02/2018

[Something changed? \(/contact/something\\_changed?destination=/access-guide/kew-green/holiday-inn-express-birmingham-star-city\)](#)



## Access Guide



[Explain these icons \(/our-icons\)](#)

[Expand all](#) [Collapse all](#)

Hotel Introduction	Collapse -
Hotel Information	Collapse -
<ul style="list-style-type: none"><li>The hotel has its own parking facilities.</li><li>This hotel has its own restaurant located on the ground floor.</li><li>Conference/meeting facilities are available.</li><li>The conference/meeting facilities are located on the ground floor.</li></ul>	
Room Information	Collapse -
<ul style="list-style-type: none"><li>The hotel has 90 rooms in total.</li><li>There is an/are accessible room(s) within the hotel.</li><li>The accessible room(s) is/are located on the ground, first and second floors.</li><li>The hotel has 5 accessible room(s) with accessible ensuite facilities.</li><li>There is/are 4 accessible room(s) with a bath.</li><li>There is/are 1 accessible room(s) with a wet room/wheel in shower.</li></ul>	

- There is an/are adjoining room(s) available for the accessible room(s).
- The accessible rooms are 4m - 22m from the hotel entrance or lift.
- There is a/are standard room(s) available on the ground floor.
- There is an/are adjoining room(s) available for the standard room(s).
- Rooms on other floors are accessed via stairs or lift.

## Auxiliary Aids

Collapse -

- Vibrating pillows with flashing beacons are available on request.
- Bed raisers are not available on request.
- Bath mats are available on request.
- All televisions have subtitles available.

## Comments

Collapse -

- Room 005 is located on the ground floor of the hotel.
- Room 005 is in the corridor at the centre right of the hotel.
- Room 005 is 22m from the hotel entrance.
- Rooms 101 and 102 are on the first floor.
- Rooms 101 and 102 face each other and are in the front corridor to the left as you exit the lift.
- Rooms 101 and 102 are both 4m from the lift.
- Rooms 201 and 202 are on the first floor.
- Rooms 201 and 202 face each other and are in the front corridor to the left as you exit the lift.
- Rooms 201 and 202 are both 4m from the lift.
- Room 5 has a wheel in shower.
- Rooms 101, 102, 201, 202 all have a lowered bath.

## Getting Here

Collapse -

## By Road

Collapse -

- This hotel is located on the outskirts of Birmingham, just off Gravelly Hill Interchange, Junction 6 of the M6. The hotel is located off the A5127, on the B4137.
- The hotel has a car park which is free for all users.

## By Bus

Collapse -

- There is not a bus stop within 150 metres of the hotel.
- The nearest bus stop is located at StarCity leisure and entertainment venue, approximately 500 metres from the hotel.
- [For more information on buses in the West Midlands please click here \(opens new tab\) \(http://nxbus.co.uk\).](http://nxbus.co.uk)

## By Train

Collapse -

- The nearest Railway Station is Aston.
- Aston Station is situated in the north of Birmingham, located approximately 1.1 miles from the hotel. There are bus and taxi routes to the hotel from the station.
- [For more information on National Rail please click here \(opens new tab\) \(http://www.nationalrail.co.uk/stations/ast/details.html\).](http://www.nationalrail.co.uk/stations/ast/details.html)

## Getting Help and Assistance

Collapse -

- There is a member of staff available for help and assistance.
- Staff receive disability awareness/equality training.
- Staff do not receive deaf awareness training.
- There is not a member of staff trained in British Sign Language.
- British Sign Language interpreters cannot be provided on request.
- The alternative formats documents can be provided in include; large print on request.
- There is an assistance dog toilet or toileting area at the venue/near by.
- The assistance dog toilet or toileting area is located on the grassed areas in front of the hotel.
- Water bowls for assistance dogs are available.
- There are not mobility aids available.

## Parking

Collapse -

### Parking

Collapse -

- The hotel does have its own parking facilities.
- The car park is located in front of the hotel.
- The car park type is open air/surface.
- The car park does not have a height restriction barrier.
- The car park does not have a barrier control system.
- The car park surface is tarmac.
- There is a/are Blue Badge parking bay(s) available.
- The Blue Badge bay(s) is/are clearly marked.
- There is/are 5 designated Blue Badge parking bay(s) within the car park.
- The dimensions of the designated Blue Badge parking bay(s) surveyed are 361cm x 475cm (11ft 10in x 15ft 7in).
- There is not a 120cm hatched zone around the Blue Badge parking bay(s).
- Parking spaces for Blue Badge holders do not need to be booked in advance.
- Clearly marked/signposted parent and child parking bays are not available.
- All parking spaces are provided on a first come first served basis.

### Paying

Collapse -

- There are not parking charges for the car park.

### Access from the Car Park

Collapse -

- The route from the car park to the entrance is accessible to a wheelchair user with assistance.
- Assistance may be required because there is/are dropped kerbs.
- The entrance is clearly visible from the car park.
- The surface on the approach to the entrance is tarmac and concrete tiles.
- There is not a road to cross between the car park and the entrance.
- There is some tactile paving on dropped kerbs between the car park and the entrance.
- The nearest designated Blue Badge parking bay is approximately 9m (9yd 2ft) from the hotel entrance.

### Drop-off Point(s)

Collapse -

- There is not a/are not clearly marked drop-off point(s).

### Comments

Collapse -

- Parking is free but the car registration number must be entered on the touchscreen at the reception desk to avoid a fine.

- The height to the top of the touchscreen is 125cm.
- There is clear signage throughout the car park explaining the parking terms.



1



2



3



4



5



6



7



8

Outside Access (Hotel Entrance)

Collapse -

Entrance

Collapse -

- This information is for the entrance located at the front of the hotel.
- The entrance area/door is clearly signed.
- There is ramped/sloped access at this entrance.
- There is a canopy or recess which provides weather protection at this entrance.
- The entrance door(s) does not/do not contrast visually with its immediate surroundings.
- The intercom is in a suitable position to allow wheelchair users to gain access.
- The height of the intercom is 105cm (3ft 5in).
- The main door(s) open(s) automatically.
- The door(s) is/are double width.
- The width of the door opening is 173cm.
- There is a second set of doors.
- The door(s) open(s) automatically.
- The door(s) is/are double width.
- The width of the door opening is 171cm.

Ramp/Slope

Collapse -

- The ramp/slope is located in front of the entrance.
- The gradient of the ramp/slope is slight.



1



2



3



4



5



6

Reception

Collapse -

Reception

Collapse -

- The reception point is located ahead as you enter.
- The reception point is approximately 6m (6yd 1ft) from the hotel entrance.
- The reception area/desk is clearly visible from the entrance.
- There is step-free access to the reception point.
- There is a clear unobstructed route to the reception point.
- There are no windows, TVs, glazed screens or mirrors behind the reception point which could adversely affect the ability of someone to lip read.
- The reception counter is not placed in front of a background which is patterned.
- The lighting levels at the reception point are good.
- The height of the reception counter is medium height (77cm - 109cm).
- There is sufficient space to write or sign documents on the counter.
- There is a lowered section of the counter.
- The lowered section of the counter is not at the recommended height of 76cm.
- There is sufficient space to write or sign documents on the lowered section of the counter.
- There is not a clear knee recess beneath the lowered section of the counter.
- The counter is staffed.
- Clipboards can be provided to anyone who is unable to use the desk.
- There is a hearing assistance system at the reception point.
- The type of system is a portable loop.
- The hearing system is available only on request.
- The hearing assistance system is not signed.
- Staff are trained to use the system.
- Signs and universally accepted symbols or pictograms, indicating lifts, stairs, WCs, circulation routes and other parts of the building are provided in the reception area.
- The type of flooring in the reception area is carpet and tiles.

Reception Waiting Area

Collapse -

- There is a waiting area close to the reception point.
- Access to the waiting area is unobstructed.
- There is a mixture of seating with and without armrests.
- There is sufficient space for a wheelchair user to use the waiting area.



1



2



3



4

Getting Around

Collapse -

## Access

Collapse -

- There is step-free access throughout the building.

## Circulation

Collapse -

- There are doors in corridors/walkways which have to be opened manually.
- The type of flooring in corridors/walkways is carpet and tiles.
- There is some flooring in corridors/walkways which is shiny and could cause issues with glare or look slippery to some people.
- There is good colour contrast between the walls and floor in the majority of corridors/walkways.
- The lighting levels are varied.
- Access to other floors/levels is via stairs and lift.

## Signage

Collapse -

- Wayfinding signage is provided.
- The colour, design and typeface of signs is consistent throughout the building.

## Audio

Collapse -

- This venue does play background music in public areas.
- Music is played in the reception lobby and restaurant areas.
- There is a hearing assistance system in the public areas of the building.
- The system is a portable loop.
- The hearing assistance loop is located at reception.
- The hearing assistance system is available only on request.



1



2



3



4

## Eating and Drinking

Collapse -

- The following information is for the restaurant/bar.
- The restaurant/bar is located on the ground floor, ahead as you enter from the hotel entrance.
- There is step-free access to the restaurant/bar.
- Full table service is available.
- Food and/or drinks can be ordered from the service counter.
- The height of the service counter is medium height (77cm - 109cm).
- There is not a lowered section of the counter.
- There is a hearing assistance system.
- The system is a portable loop.
- The hearing assistance system is not signed.
- Staff are trained to use the system.
- There is step-free access within the restaurant/bar.
- There is ample room for a wheelchair user to manoeuvre.
- This area does play background music.
- The type of flooring in this area is carpet and tiles.

- No tables are permanently fixed.
- No chairs are permanently fixed.
- No chairs have armrests on both sides.
- The nearest table is approximately 1m from the entrance/opening.
- The nearest table is approximately 3m from the till/counter.
- The distance between the floor and the lowest table is 66cm.
- The distance between the floor and the highest table is 95cm.
- Plastic/takeaway cups are available.
- Plastic/takeaway cutlery is not available.
- Drinking straws are available.
- There are hand held menus available.
- Menus are not available in Braille.
- Menus are not available in large print.
- Picture menus are not available.
- Menus are clearly written.
- Menus are presented in contrasting colours.
- The type of food served here is hot and cold meals and snacks.
- The lighting levels are good.

Comments

Collapse -

- There is a self service area with a coffee machine.
- The counter at the self service area is medium height (98cm).
- The highest control on the coffee machine is 150cm high.



1



2



3



4



5



6

Standard Room(s) (Room 6)

Collapse -

Bedroom Features

Collapse -

- The room surveyed is located on the ground floor, in the right hand corridor.
- The room surveyed at the time of the visit was Room 6.
- There is step-free access to the room surveyed.
- There is numbered signage on or near the room door.
- The width of the door is 77cm (2ft 6in).
- The bed type is double.
- The height of the bed is 73cm (2ft 5in).
- The measurement between the bed base and floor is 5cm (2in).
- Light switches are within 120cm (3ft 11in) from floor level.
- There is not an emergency alarm in the room.



- There is not a flashing fire alarm beacon within the room.
- The type of facilities within the ensuite include; a toilet, a wash basin and a shower.
- The ensuite door opens outwards.
- The width of the door to the ensuite is 67cm (2ft 2in).
- There is not an emergency alarm within the ensuite.
- There is not a flashing fire alarm beacon within the ensuite.
- The tap type is lever.
- There is a mixer tap.
- Wall-mounted grab rails are available for the shower.

Colour Contrast and Lighting

Collapse -

- The colour contrast between the external hotel room door and wall is good.
- The colour contrast between the internal hotel room door and wall is good.
- The colour contrast between the hotel room walls and floor is good.
- The colour contrast between the external ensuite door and wall is good.
- The colour contrast between the internal ensuite door and wall is good.
- The colour contrast between the walls and floor in the ensuite is good.
- The colour contrast between the grab rails and wall is good.
- The lighting levels in the room are low.
- The lighting levels in the ensuite are good.

Comments

Collapse -

- There is a deep step to access the shower.
- There is a built in seat in the shower cubicle.
- The height of the seat is 50cm.



1



2



3



4



5



6



7



8



9



10

Conference / Meeting Facilities (Meeting Room 1)

Collapse -

- Conference/meeting facilities are available.



- The conference/meeting facilities are located on the ground floor, in the right hand corridor as you enter the hotel entrance.
- There is step-free access to the conference/meeting facilities.
- The door opening width(s) is/are 75cm+ for the room(s).
- There is a hearing assistance system for the room(s) available on request.
- There is a/are chair(s) with armrests on both sides within the room(s).
- There is sufficient space for a wheelchair user to manoeuvre within the room(s).
- The lighting levels in the room(s) are good.



1



2



3



4

Other Floors

Collapse -

Stairs

Collapse -

- Stairs can be used to access other floors.
- The stairs are for public use.
- The stairs are located to the right as you enter the hotel entrance.
- The stairs are approximately 4m from the hotel entrance.
- The stairs are clearly visible from the entrance.
- There are manual, heavy, single doors to enter and exit the stairwell from the first floor upwards.
- The floors which are accessible by stairs are G, 1, 2 and 3.
- There are 15+ steps between floors.
- The height of the step(s) is/are between the recommended 15cm and 18cm.
- The going of the step(s) is/are not between the recommended 30cm and 45cm.
- The steps are clearly marked.
- There is a/are handrail(s) at the step(s).
- The steps have a handrail on both sides.
- Handrails are at the recommended height (90cm-100cm).
- Handrails do cover the flight of stairs throughout its length.
- Handrails are easy to grip.
- Handrails do not extend horizontally beyond the first and last steps.
- There is a landing.
- Clear signs indicating the facilities on each floor are not provided on landings.
- The lighting levels at the steps are good.

Comments

Collapse -

- The stairs/lift lobby doors from the first floor upwards have a locked extension leaf.



1



2



3



4

Lift

Collapse -

- There is a lift for public use.
- The lift is located to the right as you enter the hotel entrance.
- The lift is clearly visible from the entrance.
- The lift is approximately 6m (6yd 1ft) from the hotel entrance.
- The lift is a standard lift.
- A member of staff does not need to be notified for use of the lift.
- The floors which are accessible by this lift are G, 1, 2 and 3.
- There are manual, heavy, single doors to access the lift lobby from the first floor upwards.
- Clear signs indicating the facilities on each floor are not provided on lift lobby landings.
- There is a clear level manoeuvring space of 150cm x 150cm in front of the lift.
- Lift doors do contrast visually with lift lobby walls.
- The external controls for the lift are within 90cm - 110cm from the floor.
- The colour contrast between the external lift controls and the control plate is good.
- The colour contrast between the external lift control plate and the wall is poor.
- The clear door width is 80cm (2ft 7in).
- The dimensions of the lift are 127cm x 140cm (4ft 2in x 4ft 7in).
- There are no separate entry and exit doors in the lift.
- There is a mirror to aid reversing out of the lift.
- There is not a list of floor services available within the lift.
- The lift does have a visual floor indicator.
- The lift does have an audible announcer.
- The controls for the lift are within 90cm - 120cm from the floor.
- There is not a hearing loop system.
- The lift does not have Braille markings.
- The lift does have tactile markings.
- The lighting levels in the lift are good.

Comments

Collapse -

- The stairs/lift lobby doors from the first floor upwards have a locked extension leaf.



1



2



3

Accessible Room(s) (Rooms 005, 101, 102, 201 and 202)

Collapse -

Accessible Room Information

Collapse -

- The details in this section relates to the accessible room(s) with a lowered bath.
- This type of accessible room is located Accessible room 005 is located on the ground floor.Accessible rooms 101 and 102 are located on the first floor.Accessible rooms 201 and 202 are located on the second floor.
- There is step-free access to this type of accessible room.
- All accessible rooms of this type have similar specifications.
- The ensuite transfer space for the accessible rooms varies from left to right.
- Guests need to open a door between the lift and the room(s).
- The narrowest width of the corridor leading to the room surveyed was 160cm.

## Bedroom Features

Collapse -

- The accessible room surveyed is located on the second floor, in the front left corridor of the hotel.
- The accessible room surveyed at the time of the visit was Room 202.
- There is step-free access to the accessible room surveyed, via lift.
- There is numbered signage on or near the accessible room door.
- The door is manual with a key card lock.
- The fob/card reader height is 114cm.
- The width of the door is 87cm (2ft 10in).
- There are lowered spy holes available.
- The bed type is double.
- The bed height is not adjustable.
- The height of the bed is 64cm (2ft 1in).
- The measurement between the bed base and floor is 4cm (2in).
- The bed is not moveable.
- The room does have an unobstructed minimum turning space of 150cm x 150cm next to the bed.
- The height of the desk is 74cm.
- The desk is not height adjustable.
- The desk knee recess has the recommended dimensions of 70cm (height) x 50cm (depth).
- The room surveyed had a height adjustable chair with armrests and an armchair.
- Wardrobes have been adapted to allow use from a seated position.
- Light switches are between 75cm and 120cm (4ft) from floor level.
- Electric sockets are between 40cm and 100cm (4ft) from floor level.
- The window control type(s) for the room is a/are standard lever(s).
- There is not an emergency alarm in the room.
- There is not a flashing fire alarm beacon within the room.
- The type of flooring is carpet.

## Ensuite Facilities

Collapse -

- The ensuite door opens outwards.
- The door weight is heavy.
- The door is locked by a twist lock.
- The width of the door to the ensuite is 87cm (2ft 10in).
- The dimensions of the ensuite are 203cm x 217cm (6ft 8in x 7ft 1in).
- The ensuite does have an unobstructed minimum turning space of 150cm x 150cm in front of the toilet seat.
- The ensuite has not got a non-slip floor.
- There is an emergency alarm within the ensuite.
- The emergency pull cord alarm is out of reach (higher than 10cm (4") from floor).
- The emergency alarm rings to reception.
- There is not a flashing fire alarm beacon within the ensuite.
- Disposal facilities are available.
- There is a/are pedal waste paper bin disposal units.
- There is a mirror.
- The mirror is not placed at a lower level or at an angle for ease of use.
- There is a shelf immediately next to or behind the toilet.
- The shelf is not between 90cm and 100cm.
- There is a wash basin.
- The wash basin cannot be reached from seated on the toilet.
- The wash basin is not placed higher than 74cm (2ft 5in).
- The height of the wash basin is 78cm.
- There is a vertical wall-mounted grab rail on the right hand side of the wash basin.
- The tap type is lever.
- There is a mixer tap.

- There is a soap dispenser.
- The soap dispenser cannot be reached from seated on the toilet.
- The height of the soap dispenser is 94cm.

## Toilet Details

Collapse -

- The height of the toilet seat above floor level is 48cm (1ft 7in).
- The toilet has a covered cistern.
- There is a lateral transfer space.
- As you face the toilet pan the transfer space is on the right.
- The lateral transfer space is 83cm (2ft 9in).
- There is a flush, however it is not on the transfer side.
- There is not a spatula type lever flush.
- There is a dropdown rail on the transfer side.
- There is a/are wall-mounted grab rail(s) available.
- As you face the toilet, the wall mounted grab rails are on both sides.
- There is a vertical wall-mounted grab rail on the transfer side.
- There is a horizontal wall-mounted grab rail on the opposite side of the seat to the transfer space.
- There is a toilet roll holder.
- The toilet roll holder can be reached from seated on the toilet.
- The toilet roll holder is not placed higher than 100cm (3ft 3in).
- The height of the toilet roll holder is 65cm (2ft 2in).

## Bath Details

Collapse -

- The ensuite has a lowered bath.
- The height of the side of the bath from floor level is 49cm (1ft 7in).
- The tap type is lever.
- There is a mixer tap.
- There is a shower over the bath.
- The shower head is height adjustable.
- The shower control type is lever.
- There is a/are wall-mounted grab rail(s) available for the bath.

## Colour Contrast and Lighting

Collapse -

- The colour contrast between the external hotel room door and wall is good.
- The colour contrast between the internal hotel room door and wall is good.
- The colour contrast between the hotel room walls and floor is good.
- The colour contrast between the external ensuite door and wall is good.
- The colour contrast between the internal ensuite door and wall is good.
- The colour contrast between the ensuite walls and floor is good.
- The colour contrast between the drop down rail(s) and wall is fair.
- The colour contrast between the wall-mounted grab rails to the left of the toilet and wall is poor.
- The colour contrast between the wall-mounted grab rails to the right of the toilet and wall is fair.
- The contrast between the wash basin wall-mounted grab rail(s) and wall is poor.
- The colour contrast between the bath wall-mounted grab rails and wall is poor.
- The toilet seat colour contrast is poor.
- The lighting levels in the room are low.
- The lighting levels in the ensuite are good.

## Comments

Collapse -

- Room 005 is located on the ground floor of the hotel.
- Room 005 is in the corridor at the centre right of the hotel.
- Room 005 is 22m from the hotel entrance.
- Rooms 101 and 102 are on the first floor.
- Rooms 101 and 102 face each other and are in the front corridor to the left as you exit the lift.
- Rooms 101 and 102 are both 4m from the lift.
- Rooms 201 and 202 are on the first floor.
- Rooms 201 and 202 face each other and are in the front corridor to the left as you exit the lift.
- Rooms 201 and 202 are both 4m from the lift.
- Room 5 has a wheel in shower.
- Rooms 101, 102, 201, 202 all have a lowered bath.



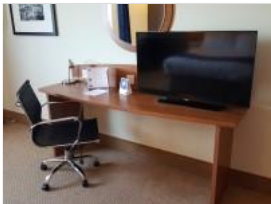
1



2



3



4



5



6



7



8

Standard Room(s) (Executive/Twin Room 223)

Collapse -

Bedroom Features

Collapse -

- The room surveyed is located on the second floor, to the rear of the right hand corridor as you exit the lift.
- The room surveyed at the time of the visit was Room 223.
- There is step-free access to the room surveyed, via lift.
- There is numbered signage on or near the room door.
- The width of the door is 77cm (2ft 6in).
- The bed type is single or double.
- The height of the bed is 64cm (2ft 1in).
- The measurement between the bed base and floor is 4cm (2in).
- Light switches are within 120cm (3ft 11in) from floor level.
- There is not an emergency alarm in the room.
- There is not a flashing fire alarm beacon within the room.
- The type of facilities within the ensuite include; a toilet, a wash basin and a shower.
- The ensuite door opens outwards.
- The width of the door to the ensuite is 73cm (2ft 5in).
- There is not an emergency alarm within the ensuite.
- There is not a flashing fire alarm beacon within the ensuite.
- The tap type is lever.
- There is a mixer tap.
- Wall-mounted grab rails are available for the shower.

Colour Contrast and Lighting

Collapse -

- The colour contrast between the external hotel room door and wall is good.
- The colour contrast between the internal hotel room door and wall is good.
- The colour contrast between the hotel room walls and floor is good.
- The colour contrast between the external ensuite door and wall is good.
- The colour contrast between the internal ensuite door and wall is good.
- The colour contrast between the walls and floor in the ensuite is good.
- The colour contrast between the grab rails and wall is good.
- The lighting levels in the room are low.
- The lighting levels in the ensuite are good.

Comments

Collapse -

- There is a deep step to access the shower.
- There is a built in seat in the shower cubicle.
- The height of the seat is 50cm.



1



2



3



4



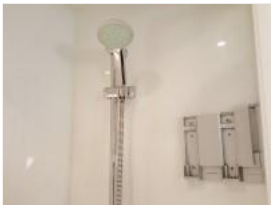
5



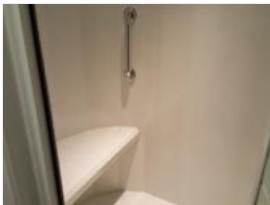
6



7



8



9



10

Accessible Toilet(s)

Collapse -

- There is an/are accessible toilet(s) for public use.

Location and Access

Collapse -

- The accessible toilet surveyed is not for the sole use of disabled people.
- This accessible toilet is located on the ground floor, in the left hand corridor as you enter the hotel entrance.
- This accessible toilet is approximately 9m (9yd 2ft) from the hotel entrance.
- There is step-free access to the accessible toilet.

Features and Dimensions

Collapse -

- This is a shared toilet.
- A key is not required for the accessible toilet.

- There is tactile and pictorial signage on or near the toilet door.
- The door opens outwards.
- The door is heavy.
- The door is locked by a lever twist.
- The width of the accessible toilet door is 87cm (2ft 10in).
- The dimensions of the accessible toilet are 142cm x 210cm (4ft 8in x 6ft 11in).
- The accessible toilet does not have an unobstructed minimum turning space of 150cm x 150cm.
- The toilet has a non-slip floor.
- There is a lateral transfer space.
- As you face the toilet pan the transfer space is on the left.
- The lateral transfer space is 69cm (2ft 3in).
- There is a flush on the transfer side.
- There is not a spatula type lever flush.
- There is a dropdown rail on the transfer side.
- There is an emergency alarm.
- The emergency pull cord alarm is fully functional.
- There is not a flashing fire alarm beacon within the toilet.
- Disposal facilities are available in the toilet.
- There is a/are female sanitary and open waste paper bin disposal units.
- There is not a/are not coat hook(s).

## Position of Fixtures

Collapse -

- There is a/are wall-mounted grab rail(s) available.
- As you face the toilet the wall-mounted grab rail(s) is/are on both sides.
- There is a vertical wall-mounted grab rail on the transfer side.
- There is a horizontal wall-mounted grab rail on the opposite side of the seat to the transfer space.
- There is a mirror.
- The mirror is not placed at a lower level or at an angle for ease of use.
- There is not a shelf next to the toilet.
- The toilet has a cistern.
- The height of the toilet seat above floor level is 48cm (1ft 7in).
- There is a toilet roll holder.
- The toilet roll holder can be reached from seated on the toilet.
- The toilet roll holder is placed higher than 100cm (3ft 3in).
- The height of the toilet roll holder is 106cm (3ft 6in).
- There is a wash basin.
- The wash basin can be reached from seated on the toilet.
- The wash basin is not placed higher than 74cm (2ft 5in).
- There are vertical wall-mounted grab rails on both sides of the wash basin.
- The wash basin tap type is lever.
- There is a mixer tap.
- There is a soap dispenser.
- The soap dispenser can be reached from seated on the toilet.
- The height of the soap dispenser is 87cm.
- There is not a towel dispenser.
- There is a hand dryer.
- The hand dryer cannot be reached from seated on the toilet.
- The hand dryer is not placed higher than 100cm (3ft 3in).

## Colour Contrast and Lighting

Collapse -

- The contrast between the external door and wall is good.
- The contrast between the internal door and wall is good.



- The contrast between the dropdown rail(s) and wall is poor.
- The contrast between the wall-mounted grab rail(s) and wall is poor.
- The toilet seat colour contrast is poor.
- The contrast between the walls and floor is good.
- The lighting levels are good.

Baby Changing Facilities

Collapse -

- Baby changing facilities are located within the accessible toilet.
- The baby change table is not set against the wall, permanently fixed at 75cm from the floor.
- The baby change table is not height adjustable.
- The height of the baby change table once extended is 94cm (3ft 1in).



1



2

Standard Toilet(s)

Collapse -

- Standard toilet facilities are available.

Access to Standard Female Toilet(s)

Collapse -

- The female toilet facilities that were surveyed are located on the ground floor, in the corridor to the left as you enter the hotel entrance.
- The female toilet(s) is/are approximately 11m (12yd 1in) from the hotel entrance.
- There is step-free access to the female toilet(s).
- There is tactile and pictorial signage on or near the toilet door.
- An ambulant toilet with wall-mounted grab rails is not available.
- The wash basin tap type is lever.
- There is not a flashing fire alarm beacon within the toilets.
- Lighting levels are low.

Access to Standard Male Toilet(s)

Collapse -

- The male toilet facilities that were surveyed are located on the ground floor, in the corridor to the left as you enter the hotel entrance.
- The male toilet(s) is/are approximately 7m (7yd 1ft) from the hotel entrance.
- There is step-free access to the male toilet(s).
- There is tactile and pictorial signage on or near the toilet door.
- An ambulant toilet with wall-mounted grab rails is not available.
- The wash basin tap type is lever.
- There is not a flashing fire alarm beacon within the toilets.
- Lighting levels are low.



1



2